



G Series

Product Brochure



High Transparency



Perfect Heat
Dissipation



Light Weight



High Brightness



Customization



Front/rear
Maintenance



High Refresh Rate



Wide viewing
angle

Dimension

- 1000 X 500 Cabinet Size
- Support size customization to meet different needs





Light&Thin

50% Weight reduced

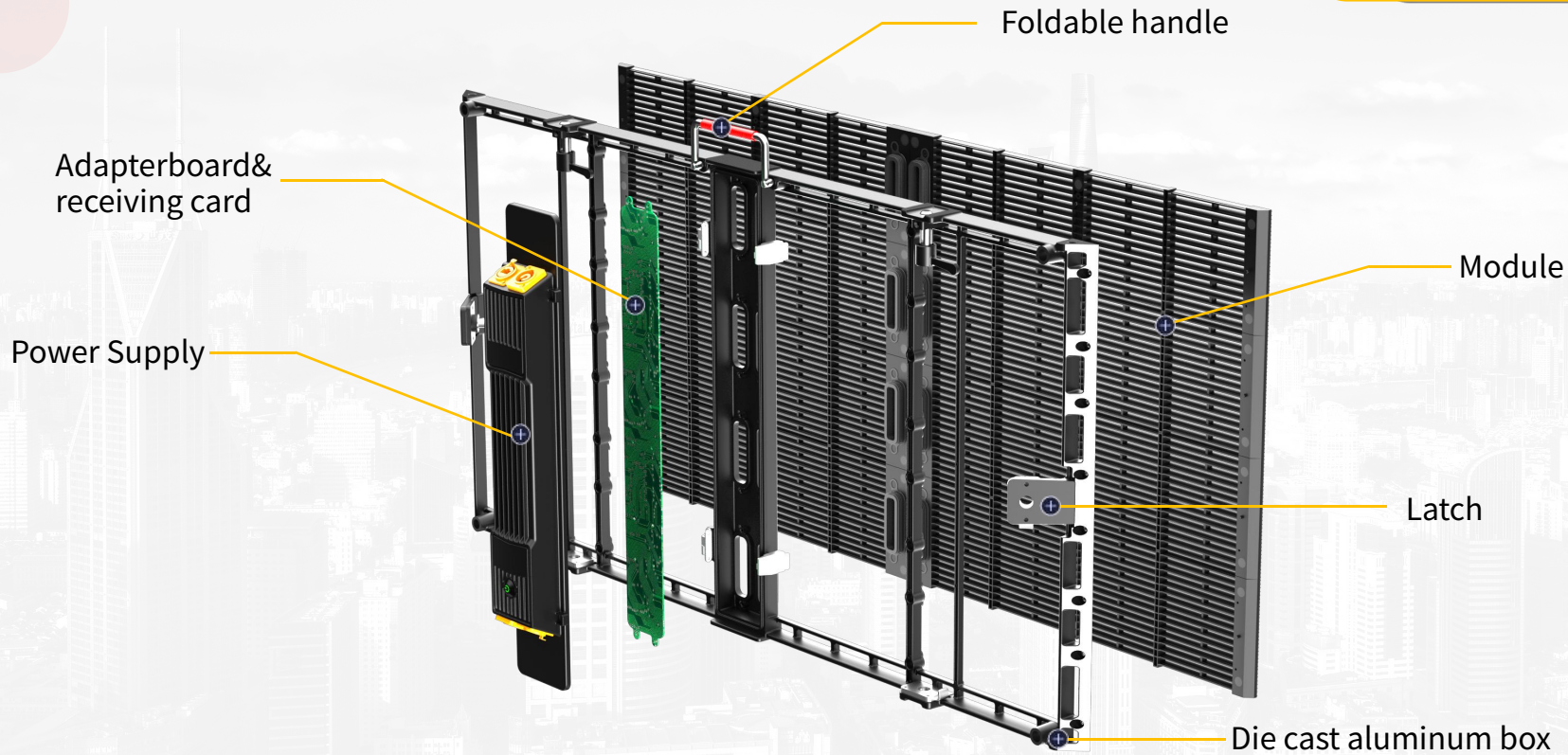
1000X500

8kg

IP65 outdoor waterproofing



Product Details



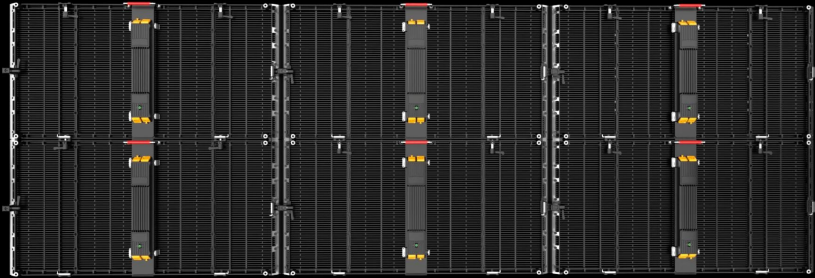
High Transparency

- Refined and simplified structural design, with a transparency rate of 70% -85%
- High transparency, no effecting lighting and visibility
- High ventilation, natural convection heat dissipation, no fan required



seamless splicing

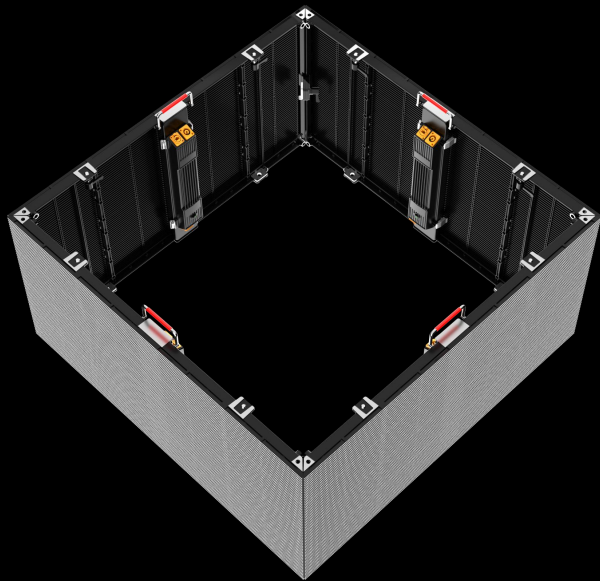
- Seamless splicing of various shapes through quick lock buckle connection
- Modular design, modules and light strips can be independently disassembled for quick maintenance



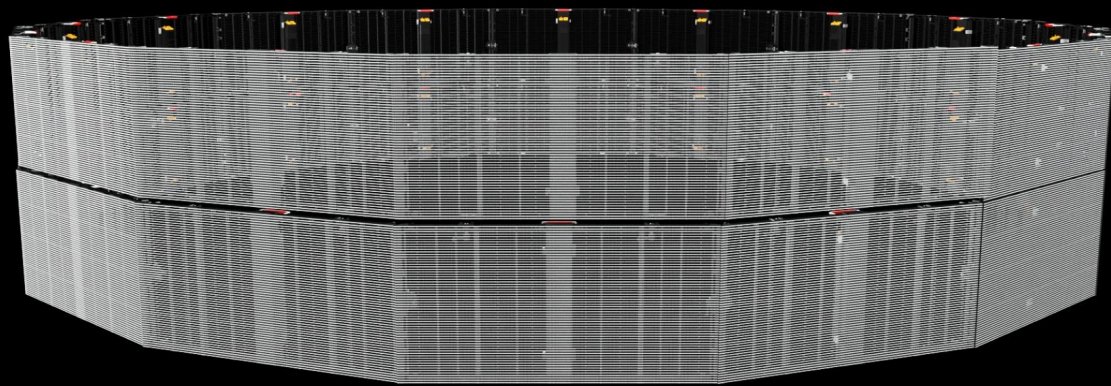
Seat mounting



Hoisting



Square installation



Arc type installation

High refresh rate

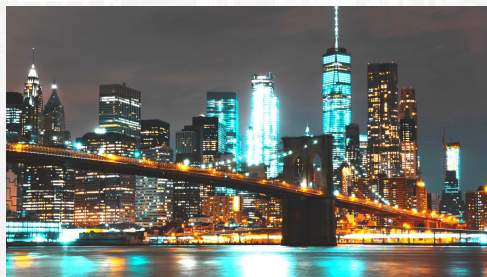


High refresh rate

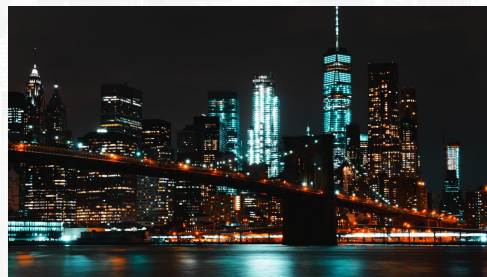


Low refresh rate

High grey scale



Hig grey scale



Low grey scale

160° Super wide viewing angle

Perfect presentation of images from any angle



specifications

P3.91-7.81

Pixel spacing (mm)	3.91(about) 7.82(up and down)
LED Type	SMD1921
Physical density(Dot/sqm)	32768
Drive mode	8-16
Brightness (cd/m ²)	1500-2500
Transparency	70%-85%
Refresh rate(Hz)	3840
Protection level	IP65
Brightness adjustment	Level 256
Viewing angle(V/H)	160°/160°
Best Viewing Distance	4m-50m
Power supply requirements	AC220-240V
Max. power consumption(W/sqm)	800
Avg. power consumption(W/sqm)	150-250
Cabinet size(mm)	1000X500X32
Cabinet weight(kg)	8
Installation method	Seat installation and lifting
Maintenance	Front/rear
Power input	AC90-264V,47-63Hz
Working temperature/humidity(°C/RH)	-20~60°C/10%~85%
Storage temperature/humidity(°C/RH)	-20~60°C/10%~85%
Certification	CCC/CE/RoHS/FCC/CB/TUV/IEC

Application





THANKS

Contact Us

Please feel free to contact HARSE LED-CITY, If you have any inquiry about LED Display Solutions. Our professional sale & tech team will give you response in 24 hours.

Email: admin@led-city.com WhatsApp: +86 13918891309